

# ooranga

**OORANGA** provides preschool services in Boggabri, Curlewis, Currabubula, Mullaley, Premer, Spring Ridge and Walhallow.

**OORANGA** mobile playgroup and toy library operate in Blackville, Boggabri, Breeza, Kelvin, Manilla, Maules Creek, Mullaley, Pine Ridge, Premer, Spring Ridge, Wallabadah, Walhallow, Willow Tree.

An extensive Toy Library is also operated at the **OORANGA** base located in Gunnedah

Contact us to find out when we are visiting your neighbourhood next and what groups we are running.



## ooranga philosophy

**VISION** Young children flourish within their local community

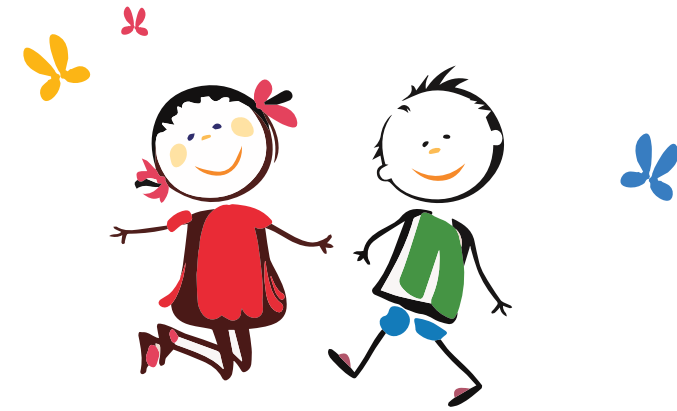
**MISSION** To support individual child development through the provision of high quality, mobile early childhood services to rural communities

### VALUES

- C**hild directed programs
- I**nclusion of all children and families
- R**espect in our interaction with others
- C**ommitment to local communities
- L**earn through play
- E**xcellence through continuous improvement

Contact us or visit [www.ooranga.com.au](http://www.ooranga.com.au) to find out more.

**OORANGA** FMRU Assoc Inc  
112 Barber Street / PO Box 699  
GUNNEDAH NSW 2380  
Phone 02 6742 0603  
[www.ooranga.com.au](http://www.ooranga.com.au)



## ooranga

ooranga family mobile resource unit assoc inc

## Young children flourish in their local community

preschool playgroup & toy library

Are you looking for a fun and relaxed place for your child to play and learn?

Are you finding children's services difficult to access?

# ooranga

is a mobile children's service near you that could work for your family

## what are mobile children's services?

Mobile children's services take on many forms including pre-school, childcare, toy libraries, playsessions and playgroups. They generally work with children 0-6 years old.

## why are they 'mobile'?

Mobile children's services are early learning services 'on wheels'. The mobile children's services come to you! Mobiles visit communities where there are no other children's services available.

## where are they run?

Mobile children service's run in community facilities like parks, halls, and unused school rooms. They are a great first step for families accessing early learning services and are a good way to get involved in your local community.

## what are the services like?

Mobile children's services deliver regular play based early learning sessions. The relaxed and fun sessions offer a wide range of experiences designed to encourage developing across all areas. Activities may include painting, games, craft, story time and most importantly, play!

What are the benefits of mobile children's services?

**flexible,**  
**welcoming,**  
**inclusive,**  
**connecting,**  
**learning**  
and **play,**  
**accessible**

